

Office to let

Terranita Business Center

Bucharest, Sector 2, Gheorghe Titeica 121 C

Building information

Building status	Existing
Parking ratio	1 / 150 sq m
Total building area	2 960 sq m

Commercial terms

Office space*	after login *
Service charge*	after login *
Availability	after login *

* Asking terms for m²/month

Location

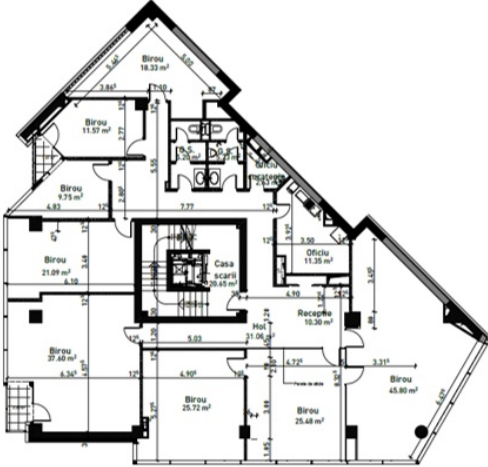


Available space

285 sq m

Available office space

Typical floor plan



Public transport

Bus: 605

Contact



+40 21 302 3400

More information